



FROM VISION TO DECISION

NEWSLETTER

YEAR 3, NUMBER 5

Leadership Team:

Program Manager

Ragnar Nortvedt
Tel 55976456/92829508
ragnar.nortvedt@helse-bergen.no
Scientific Director
Odd Helge Gilja
odd.gilja@helse-bergen.no
Arvid Lundervold
arvid.lundervold@biomed.uib.no

Helwig Hauser
helwig.hauser@uib.no

Xue-Cheng Tai
tai@math.uib.no

Renate Grüner
renate.gruner@ift.uib.no

Dag Magne Ulvang
dagu@cmr.no

Ingfrid Haldorsen
ingfrid.haldorsen@helse-bergen.no

General Secretary
Elin Myhrvold Riple
Tel: 55972954
elin.riple@med.uib.no

Project Leaders:

Roald F. Havre
Torfinn Taxt
Bjørn Tore Gjertsen
Knut Matre
Paul L. Muren
Arvid Lundervold
Jarle Rørvik
Ingfrid Haldorsen
Eli Renate Grüner
Martin Biermann
Ivan Viola
Trygve Hausken
Mai Tone Lønnebakken

Web:
<http://medviz.uib.no>

Postal address:
MedViz
Att. Ragnar Nortvedt
Haukeland University
Hospital,

5021 Bergen, Norway

Dear MedViz Supporter

Welcome back from a great summer with extraordinary nice weather conditions in June and July and early tropical storms in August. We hope that you will spend some of your stored summer energy into MedViz related activities this autumn. The first opportunity is to take active part or visit our stand at Forskningsdagene:

<http://www.forskningsdagenebergen.no>

at Festplassen Friday 19.09 and Saturday 18.09. In the present number you can also read an interview with Birgitte Berentsen, the new coordinator at NCUG and we have visited the upcoming Bikuben Conference Center at Haukeland campus.

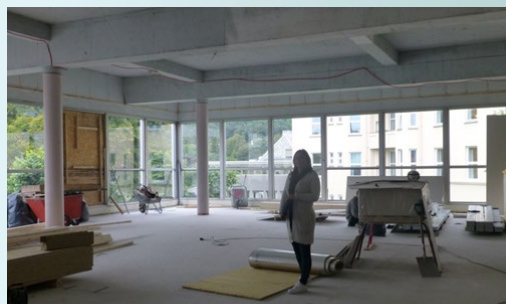
Presentation of Birgitte Berentsen



Birgitte took her Bachelor in Biomedicine at University of Brighton in 2007, with in-depth study of medical research. She continued with a Master in Human medical cell biology in 2009 at UiB, under supervision of Professor Clive Bramham in Neuroscience Research Group, Department of Biomedicine. Then, Birgitte moved to Germany and worked at the Department of Experimental Neurology at Jena Krankenhaus, Thüringen for one year where she investigated extra -and intrasynaptic signaling mechanisms using patch clamping, an electrophysiological single cell recording technique.

[Read the interview](#)

Bikuben kurs- og konferansesenter



We have taken a quick look at the upcoming, new 1600 m² conference facilities at the Campus of Haukeland University Hospital. The Center will be located in Bikuben, the former cantina building and managed by Anita Lyssand. Merete Skjellanger Hilby showed us around with great enthusiasm and told us that the Bikuben Conference Center will have a total simultaneous capacity of 350 guests, including room for 96 participants in the auditorium, 150 participants in the great hall and 42 participants in the class

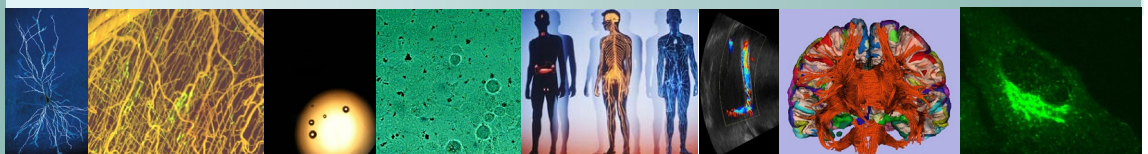
room. In addition to these big rooms, there will also be smaller meeting rooms and computer rooms. All rooms will have top modern audiovisual equipment, and you can eventually transfer video from the auditorium to the excellent mingling areas. The HUH Management Board will also have their own meeting room. The Bikuben Conference Center will be an innovative center with a Nordic expression.

[Read more](#)

cmr



HELSE BERGEN
Haukeland University Hospital



Upcoming events

19.-20. September: Forskningsdagene, MedViz stand at Festplassen

13. October: Deadline for BTO and Sparebanken Vest idea competition: www.bergento.no/idea

17. October: MedViz Seminar by Ingfrid Haldorsen, Njål Brekke og Camilla Krakstad:
“Preclinical imaging studies of orthotopic mouse models in endometrial cancer “.

21. November: MedViz Seminar

12. December: MedViz Seminar

Ragnar Nortvedt
Program Manager

