



# FROM VISION TO DECISION

## NEWSLETTER

YEAR 5, NUMBER 02

### Leadership Team:

#### Program Manager

Ragnar Nortvedt  
Tel 55970529 / 92829508  
[ragnar.nortvedt@helse-bergen.no](mailto:ragnar.nortvedt@helse-bergen.no)  
Scientific Director  
Odd Helge Gilja  
[odd.gilja@helse-bergen.no](mailto:odd.gilja@helse-bergen.no)  
Arvid Lundervold  
[arvid.lundervold@biomed.uib.no](mailto:arvid.lundervold@biomed.uib.no)  
Helwig Hauser  
[helwig.hauser@uib.no](mailto:helwig.hauser@uib.no)  
Antonella Munthe-Kaas  
[antonella.zanna@uib.no](mailto:antonella.zanna@uib.no)  
Renate Grüner  
[renate.gruner@ift.uib.no](mailto:renate.gruner@ift.uib.no)  
Dag Magne Ulvang  
[dagu@cmr.no](mailto:dagu@cmr.no)  
Ingrid Haldorsen  
[ingfrid.haldorsen@helse-bergen.no](mailto:ingfrid.haldorsen@helse-bergen.no)  
General Secretary  
Elin Myhrvold Riple  
Tel: 55972954  
[elin.riple@med.uib.no](mailto:elin.riple@med.uib.no)

#### Project Leaders:

Roald F. Havre  
Torfinn Tøxt  
Bjørn Tore Gjertsen  
Knut Matre  
Paul L. Muren  
Arvid Lundervold  
Jarle Rørvik  
Ingrid Haldorsen  
Eli Renate Grüner  
Martin Biermann  
Ivan Viola  
Trygve Hausken  
Mai Tone Lønnebakken

Web:  
<http://medviz.uib.no>

Postal address:  
MedViz  
Att. Ragnar Nortvedt  
Haukeland University  
Hospital,  
Møllendalsbakken 7,  
5021 Bergen, Norway

## Dear MedViz Supporter

We are happy to be active on different arenas. This month we have had a MedViz Seminar on the general topic "Industrial contributions to innovations in the hospitals" where Oslo Medtech and three local companies, namely KinN Therapeutics AS, BerGenBio AS and NordicNeuroLab AS presented themselves for 30 participants. Indeed, we are proud to have these companies almost at the campus! We have also recently presented MedViz in a meeting with Research Group Leaders at Department of Biology, UiB and given a lecture in Bergen Biostatistical Seminars. We have also tested and swallowed the *SmartPill* to support Hilde L. von Volkmann's gastroenterology research. Furthermore we congratulate Dr. Jenny Husby with well performed PhD defense this month! It is also a pleasure to see that our network has been expanded lately to include colleagues from IRIS and from Bergen University College (HiB). We therefore bring you an interview with Assoc. Professor Cecilie Brekke Rygh from HiB in the current Newsletter.

## Interview with Assoc. Professor Cecilie Brekke Rygh



Cecilie Brekke Rygh grew up in Vik in Sogn & Fjordane county and in Knarvik North of Bergen. Cecilie realized that there were no further education opportunities after she had finished her radiographer education at Bergen University College (HiB) in 1996. Cecilie therefore also fulfilled a Mathematical Natural Science study and wrote her Master thesis *Physiological Imaging of the Human Brain using Diffusion and Perfusion MRI* in 2001 under supervision by Professor Arvid Lundervold. In parallel to her studies, Cecilie also worked at the Emergency Clinic (Legevakten) in Bergen for six years. –This was my strategy to cover our living costs and simultaneously giving me valuable and hands-on experience in clinical practice radiography, as well as on fractures and treatment of these, Cecilie tells. [Read the interview with Rygh](#)

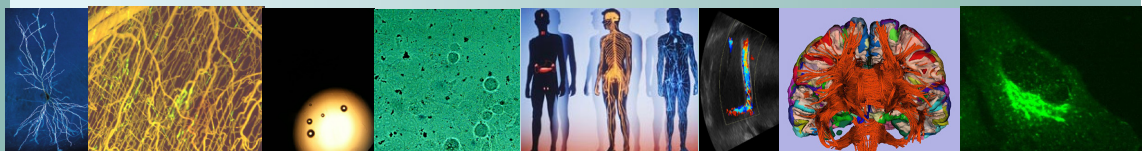
## MedViz has become part of a European COST Action

Prof. II Ragnar Nortvedt and Dr. YeonKyeong Lee (Norwegian University of Life Sciences, Ås) have now become Norwegian members of the Management Committee of the COST Action "A new Network of European BioImage Analysts to advance life science imaging" (NEUBIAS). Professor Arvid Lundervold has been appointed as deputy member. The main aim and objective of the Action is to establish a BioImage Analysts network to maximize the impact of advances in imaging technology in life Sciences and to boost bioimaging-based research. This will particularly support biologists with image analysis resources. We think that MedViz role will be to contribute in bridging the gap between biologists and other medical and natural science disciplines dealing with imaging and visualization. We also foresee a positive synergy effect from our associated membership in the EuroBioImaging infrastructure facilities network, together with MIC at Dept. of Biomedicine, UiB. The COST Action will be implemented for four years (2016 – 2019) and so far 21 countries are included.

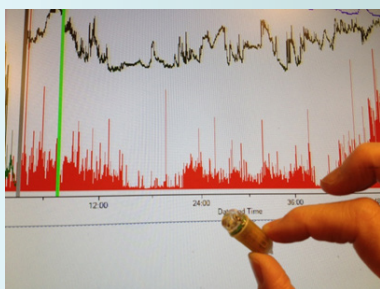
cmr



HELSE BERGEN  
Haukeland University Hospital



## MedViz has tested the SmartPill



Under the guidance of consultant Hilde Løland von Volkmann at Medical Dept., Section for Gastroenterology, HUH, the Editor of MedViz Newsletter has tested and swallowed the SmartPill as healthy control. This is part of Hilde's interesting studies on fluid overload and motility disturbance in the small intestine to characterize the effects of an activating GUCY2C gene mutation, present in parts of the population. The SmartPill was easy to swallow and came out the natural way after 2,5 days in my case. -Here we see individual variations between patients in total migration time between 1-5 days, Hilde explains. -We really need more volunteers to get a sufficiently large knowledge data base, especially more healthy men are wanted(!), Hilde adds. For my own experience, I will just underline that this test was running very smoothly, and gave continuous measurements of my varying pH and pressure characteristics. These data will be compiled together with results from blood samples and my diary notes of activity and meals.

Indeed very fascinating, and I must admit that it was a pleasure to be in bed during my working hours accompanied by three dedicated women aside.... So gentlemen, please send email to [hilde.loland.von.volkmann@helse-bergen.no](mailto:hilde.loland.von.volkmann@helse-bergen.no) to become a healthy volunteer.

## Well performed PhD defense by Jenny Hild Aase Husby



Dr. Jenny Husby from Department of Clinical Science, UiB defended her thesis "Functional imaging to promote individualized and targeted therapy in endometrial cancer" with great success on February 5. Congratulations! Professor **Ingrid S. Haldorsen** has been Jenny's main supervisor with Professor **Helga B. Salvesen** as co-supervisor. The defense was chaired by Professor Jarle Rørvik. The opponents, consultant **Tore Bach-Gansmo**, Oslo University Hospital and Professor **Claus Høgdall**, Rigshospitalet / University of Copenhagen challenged Jenny in many ways contributing to a long and interesting discussion. The main conclusion was that functional and structural imaging biomarkers from MRI and FDG-PET/CT are promising for preoperative identification of high-risk patients in endometrial carcinoma.

*The PhD defense session has been concluded. From the left: Chairman of the Committee Professor Karen Rosendahl, 1st Opponent Consultant Tore Bach-Gansmo, 2nd Opponent Professor Claus Høgdall, MD PhD Jenny H. A. Husby, Supervisor Professor Ingrid S. Haldorsen and Chairman of the Defense Professor Jarle Rørvik.*

Jenny Husby's trial lecture "Can PET/MR contribute during progress of gynecologic cancer?" was given the same day. Fortunately, **Jenny** repeated this lecture for colleagues at the Dept. of Radiology, HUH on February 18. The main conclusions from this lecture can be summarized:

PET/MR contributes by giving

- Improved diagnostic safety and less ionized irradiation risk than PET/CT
- Integrated and simultaneous imaging from the two modalities
- Improved soft tissue contrast
- Reduction in nos. of scans, since one simple scan of each patient normally should be adequate each time

## Upcoming events

**Friday 4. March:** MedViz Seminar: PDE models of flow in live tissue where both time and space are accounted for, by Erlend Hodneland (CMR & MedViz), Erik Hanson (Dept. of Mathematics, UiB) and Geir Nævdal (IRIS, Bergen Dept.), MedViz Incubator, Møllendalsbakken 7, 5th floor, at 12:00-13:30.

**Wednesday 9. March:** Free Workshop: Modelling of flow in live tissue - Methodological interaction between geo- and life-science, at CMR, Fantoft, Bergen, at 09:00-16:00 (lunch is included). [See Program.](#)

**14. - 15. April:** 2nd Symposium of Bridging Nordic Imaging and the 1st Cellular Imaging workshop in Gothenburg, Sweden. <http://ccigothenburg.com/>

**9. - 10. May:** Nordic Health Research and Innovation, NRI Conference: Moving further with Medical Tailoring. The Conference also includes a parallel Workshop on Impact of Imaging and Visualization in Future Medicine & Health Care. [Radisson Blu Airport Hotel](#), Oslo Gardermoen. <http://nordicnetworks.org/nri-conference/program/>

**MedViz and VCBM joint Conference, Bergen, September 7 - 9, 2016**

<http://medvizvcbm.uib.no/>

Facebook event: <https://www.facebook.com/events/770818463024537/>

Facebook page: <https://www.facebook.com/medvizvcbm/> (like it!)

**Ragnar Nortvedt**  
Program Manager

